



# Pars Well Management

## Main Features

- Propose different solutions to resolve production problem for an individual well
- Prioritize appropriate solutions for a production problem for an individual well
- Help to discover probable cause of some production problems e.g. casing leakage for unwanted water production
- Present diagnostic tests for some production problems e.g. Asphaltene
- Prioritize wells with the same solution for resolving corresponding production problem



Research Institute Of  
Petroleum Industry

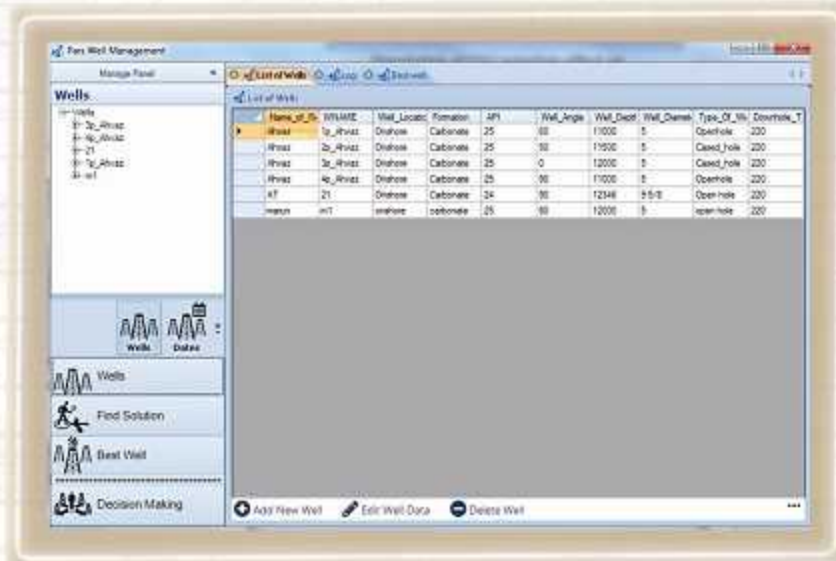


Research Institute of Petroleum Industry (RIPI)  
West Blvd. Azadi Sport Complex, P.O.Box: 14665-173 ,Tehran , Iran  
Tel : +98(21) 44739540-60 , Fax: +98(21) 44739712  
[www.ripi.ir](http://www.ripi.ir)

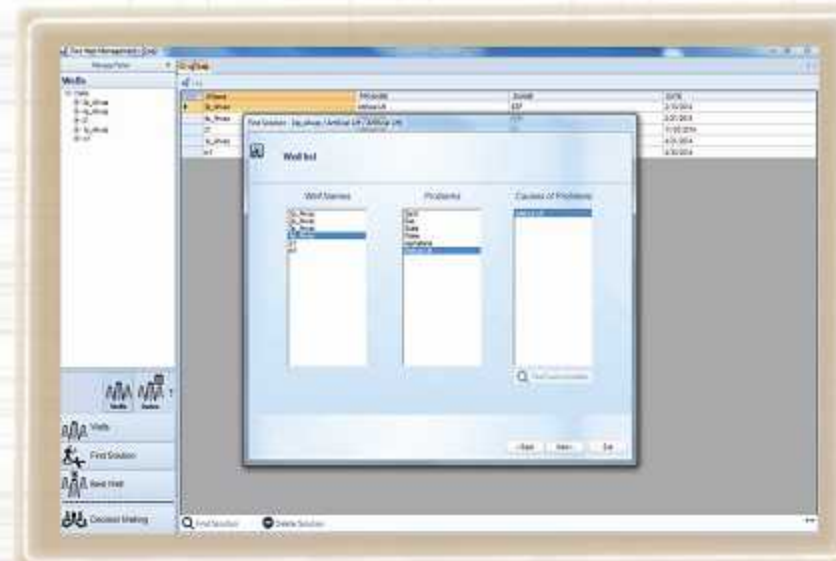




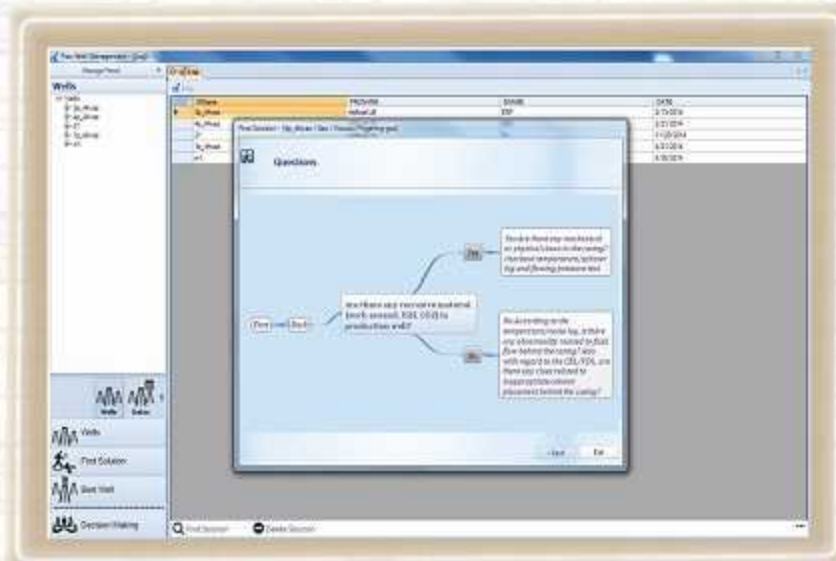
PWM™ is mainly management software to investigate prioritization of different alternatives in front of managers. It uses two methods from package of Multi Criteria Decision making Tools (MCDMT). These methods are fuzzy AHP and TOPSIS. Functionalities of PWM™ are proposing and prioritizing different appropriate solutions for a production problem for an individual well and Prioritizing wells with the same solution for resolving corresponding production problem. Also; the software helps users to discover probable cause of some production problems e.g. casing leakage for unwanted water production. This software also presents diagnostic tests for some production problems e.g. Asphaltene.



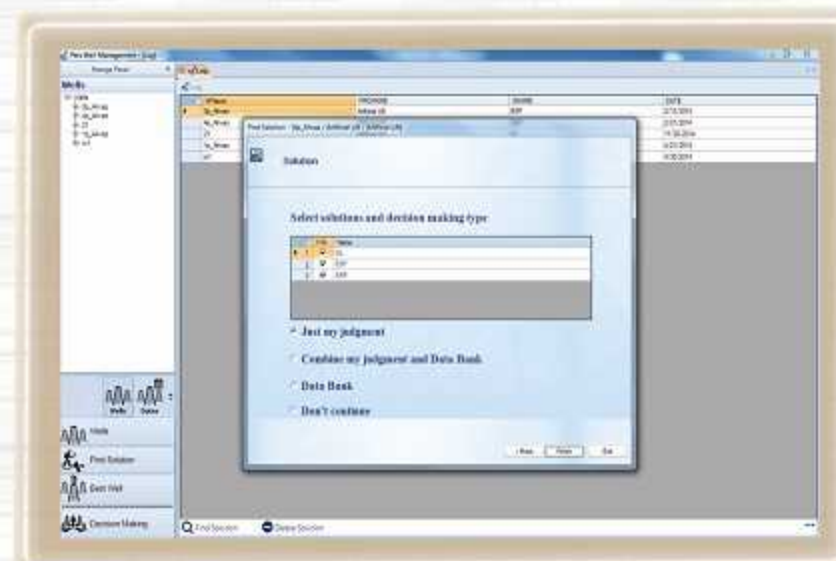
Entering well data in first screen of PWM



Selection of Well and its problem from the lists to find all appropriate solutions



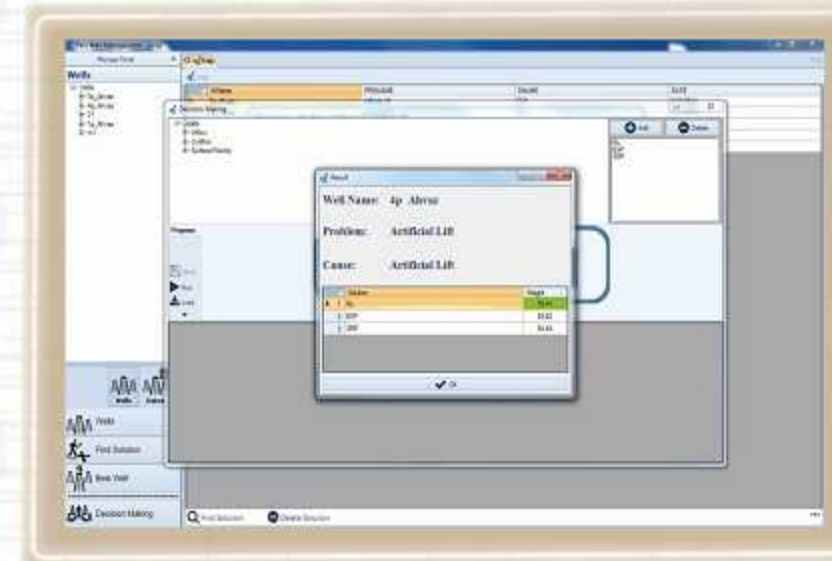
Asking some question from users to discover probable cause of production problem



Proposing different solutions and different ways of prioritization



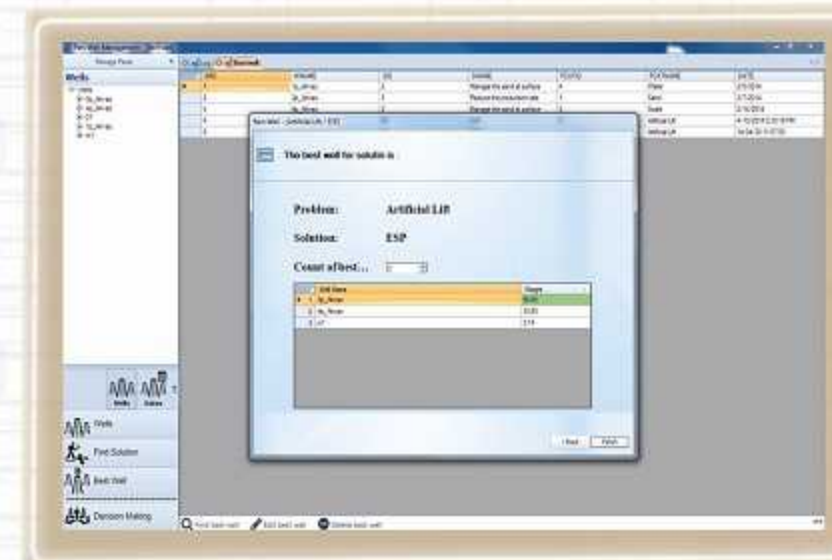
Matrix for pair-wise judgments in Fuzzy AHP



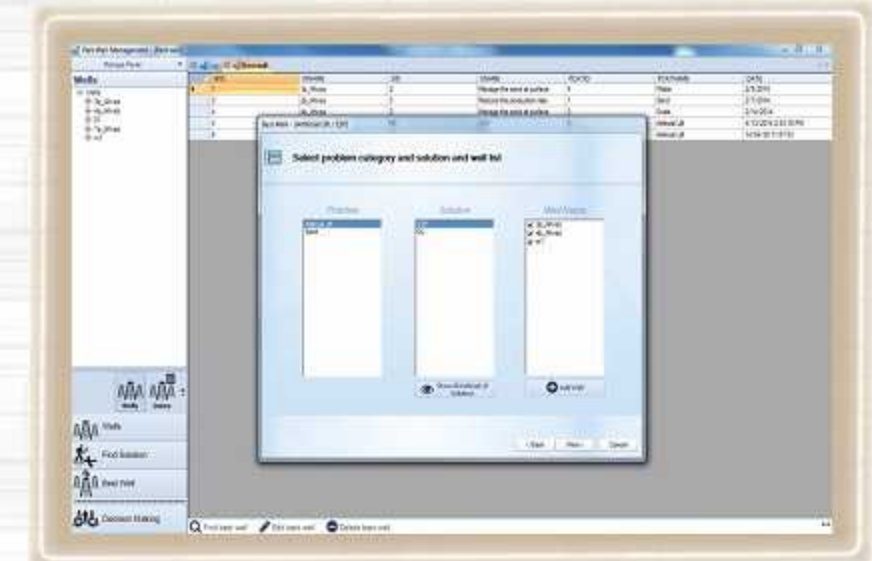
Prioritization of all appropriate solutions for an individual well



Enter required data of well to prioritize all appropriate solutions



Prioritization of wells with the same solution for their problems



Selection of wells with the same solution to be prioritized

PWM™ is a flexible software in such a way that it is possible to add other wells and solutions rather than the investigated wells and solutions to be considered in prioritization process of wells.